

Crystal Cut™



MUSEUM QUALITY MASTERPIECES
FOR JEWELRY DISPLAY

Oradia corp.

MAKING OUR DISPLAY YOURS

The Ovadia Crystal Cut line offers a wide selection of alternatives for designing your custom display. Our design consultants are available to help you design a display that meets your needs.

SURFACE FINISHES

We offer a variety of finishes for most of the products featured in the Crystal Cut line.



CLEAR

FROSTED

FACETED

FACETED & FROSTED

MIRRORED BACK

CUSTOM ARRANGEMENTS

Customized jewelry arrangement can be created by mounting holding devices or ring pedestals.



EARRING
TREES

RING FINGERS

RING-CLIPS

FLOATING

PEDESTAL

VERTICAL

HORIZONTAL



MOUNTING-RING PEDESTAL



HOLES DRILLED TO
ACCOMMODATE HOLDING CLIP

LOGOS

Logos or product information can be added to any of the crystal pieces by either printing or deep-etching with Ovadia's unique technology.



DEEP-ETCHING



RING PEDESTAL

Our wide selection of ring pedestals offer you the ability to create a variety of customized layout designs.

SELF STANDING PEDESTALS

Use our self-standing ring pedestals to display your finest pieces in any layout you please.



- | | | |
|---|----------|-------------------|
| A | CF-MOB-L | BALLERINA FROSTED |
| B | CF-FOB-L | BALLERINA CLEAR |
| C | CF-M02 | UNIVERSAL FROSTED |
| D | CF-F02 | UNIVERSAL CLEAR |
| E | CF-M03-L | EVEREST |
| F | CF-C03-L | PURITY |
| G | CF-M04-L | ICEBERG |
| H | CF-F06-L | PACIFIC |

MOUNTABLE PEDESTALS

Our mountable crystal fingers are ideal for designing unique and customized displays.



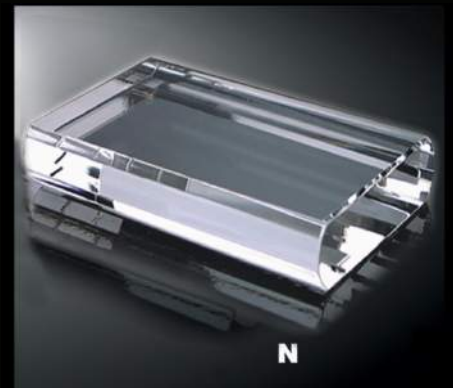


RING BASES

Use our universal bases to create your own unique look and feel. Make a statement by mounting the Ring Pedestals onto individual bases. Or add a personalized touch with a logo or customized message etched within.



- | | | |
|---|---------|-------------------|
| A | CB008 | PLACID |
| B | CB018 | TEAR DROP |
| C | CB021 | ROUNDED TRIANGLE |
| D | CB020 | CIRCULAR |
| E | CB022 | ROUNDED SQUARE |
| F | CB013 | HEXAGONAL |
| G | CB023 | FACETED HEXAGON |
| H | CB017 | 5 SIDED DIAMOND |
| I | CB011 | FACETED TRIANGLE |
| J | CB012 | 4 SIDED DIAMOND |
| K | CB004-1 | 1 FINGER AND BASE |
| L | CB004-2 | 2 FINGERS & BASE |
| M | CB004-6 | 6 FINGERS & BASE |
| N | CB005-3 | FACETED EDGE BASE |



DIAMOND-CUT RING COLLECTION

Showcase your rings in an elegant manner.

Our wide selection of diamond cut ring pedestals makes it possible for you to choose the shape that best complements the cut of any gemstone.



A	CHH-60RH	HEART DIAMOND
B	CRH001-60	ROUND DIAMOND
C	CRH005	TRIANGULAR DIAMOND
D	CRH006	SQUARE DIAMOND
E	CRH007	RECTANGLE DIAMOND
F	CRH008	OVAL DIAMOND
G	CRH009	PENTAGON-1 BEVEL
H	CRH010	OCTAGON DIAMOND
I	CRH011	PENTAGON-2 BEVEL
J	CRH012	CIRCULAR DIAMOND
K	CRH013	HALF CIRCLE
L	CRH014	HEXAGON DIAMOND

DIAMOND PLAQUES

The complement to any diamond showcase. A logo or message may be etched onto the flat surface of the diamond.



A	CD010	DIAMOND PLAQUE #10
B	CD009	DIAMOND PLAQUE #9
C	CD008	DIAMOND PLAQUE #8
D	CD007	DIAMOND PLAQUE #7
E	CD006	DIAMOND PLAQUE #6
F	CD005	DIAMOND PLAQUE #5
G	CD004	DIAMOND PLAQUE #4
H	CD003	DIAMOND PLAQUE #3
I	CD002	DIAMOND PLAQUE #2
J	CD001	DIAMOND PLAQUE #1
K	CB024	CUT BOTTOM DIAMOND
L	CB025	SHALLOW DIAMOND
M	CB027	SCOOP DIAMOND



DIAMOND CUT EARRING & PENDANT COLLECTION

Our jewelry holders have been specially designed to highlight the elegance of your jewelry. Now you can easily display your earrings without having to remove the backs, and showcase pendants with or without a chain.

ITEM #	DESCRIPTION
A CHH60R	HEART RING
B CHH60E	HEART EARRING
C CHH60P	HEART PENDANT
D CHH70N	HEART NECKLACE
E CRH70R	RECTANGLE RING
F CRH70E	RECTANGLE EARRING
G CRH70P	RECTANGLE PENDANT
H CRH70N	RECTANGLE NECKLACE
I CSH60R	SQUARE RING
J CSH60RE	SQUARE EARRING
K CSH60P	SQUARE PENDANT
L CSH60N	SQUARE NECKLACE
M CD5-P	PENDANT NECK
N CD5-PE	PENDANT & EARRING
O CD5-N	NECKLACE
P CD5-NE	EARRING AND NECKLACE



EARRING & PENDANT COLLECTION

Our refined earring and pendant holders will allow your customers to focus solely on the elegance of their jewelry.



- | | | |
|---|------------|------------------|
| A | CER001-H30 | OCTAGON COLUMN |
| B | CER002-560 | ANGLED RECTANGLE |
| C | CER003-T80 | VERTICAL PYRAMID |
| D | CER004-H80 | MOON |
| E | CER005-H90 | EARRING TREE |
| F | CPD001 | BUST PENDANT |
| G | CPD003 | CURVE TOP |
| H | CPD004 | ANGLED-CUT |
| I | CPD006 | PENTAGON-CUT |
| J | CPD007 | HEART |
| K | CPD008 | SQUARE FACETED |



NECKLACE COLLECTION

Available in matte or clear finish, these necklace displays create a stunning backdrop for your fine chains. Mirror backing may be added for a more substantial effect.

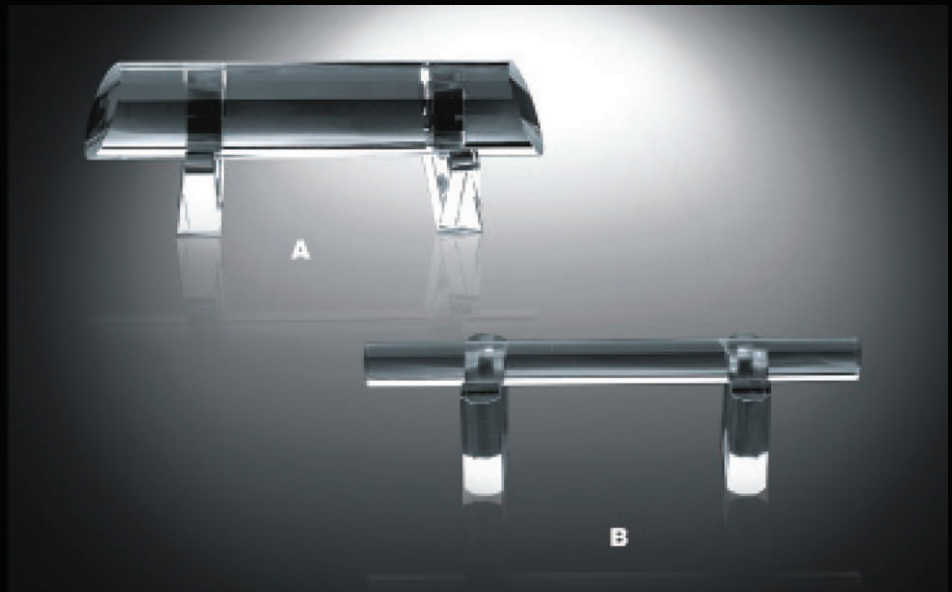
- A CN012-5 VERTICAL RECTANGLE
- B CN001-5 BUST NECKLACE
- C CN005-5 CURVED TOP
- D CN008-5 SCULPTURED
- E CN009-5 CYLINDER



BRACELET & RAMP COLLECTION

Appearing to float on a curved and luminous base, these displays capture the shimmer and sheen of your best bracelets and bangles. All displays are available in clear or frosted finishes.

A	CBG001	LARGE BANGLE
B	CBG002	SMALL BANGLE
C	CBL001-L	HALF CIRCLE
D	CBL002-L	HALF OVAL
E	CBL003-L	MULTI-CURVE
F	CBL004-L	VERTICAL
G	CBL005-L	DUAL-CURVE
H	CBL006-L	DUAL-CURVE



BRACELET & WATCH HOLDERS

Our variety of bracelet and watch displays are available in clear or frosted finishes.

Watch clips are available in clear or opaque finishes, and can be oriented horizontally or vertically.

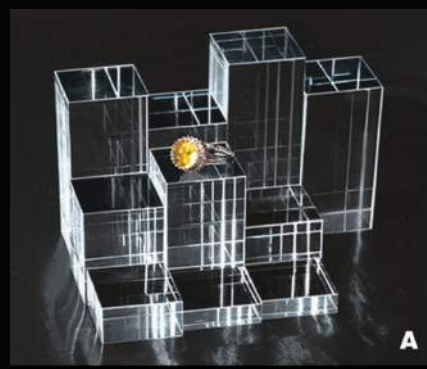


A	CW0-003M	WATCH STAND
B	CW0-001M	WATCH BRACELET
C	CW0-005M	WATCH BRACELET
D	CWD-1R30	CUT-CYLINDER
E	CT-5	PYRAMID
F	CWD-2R20	FACETED CYLINDER
G	CWD-2530	CUT-VERTICAL RECTANGLE
H	CWD-1530	CUT-VERTICAL DIAMOND
I	CWD-3520	SQUARE COLUMN
J	CWD-1H30	HEXAGON FACETED

K	CWD-2H20	HEXAGON
L	CWD-1D20	HALF SPHERE
M	CWD-2D30	LARGE SPHERE
N	CWD-3D40	SMALL SPHERE
O	CWD-2T30	LARGE TRAPEZOID
P	CWD-1T40	SMALL TRAPEZOID

RISER COLLECTION

Use our different sized angled risers to add depth and dimension to your showcase.



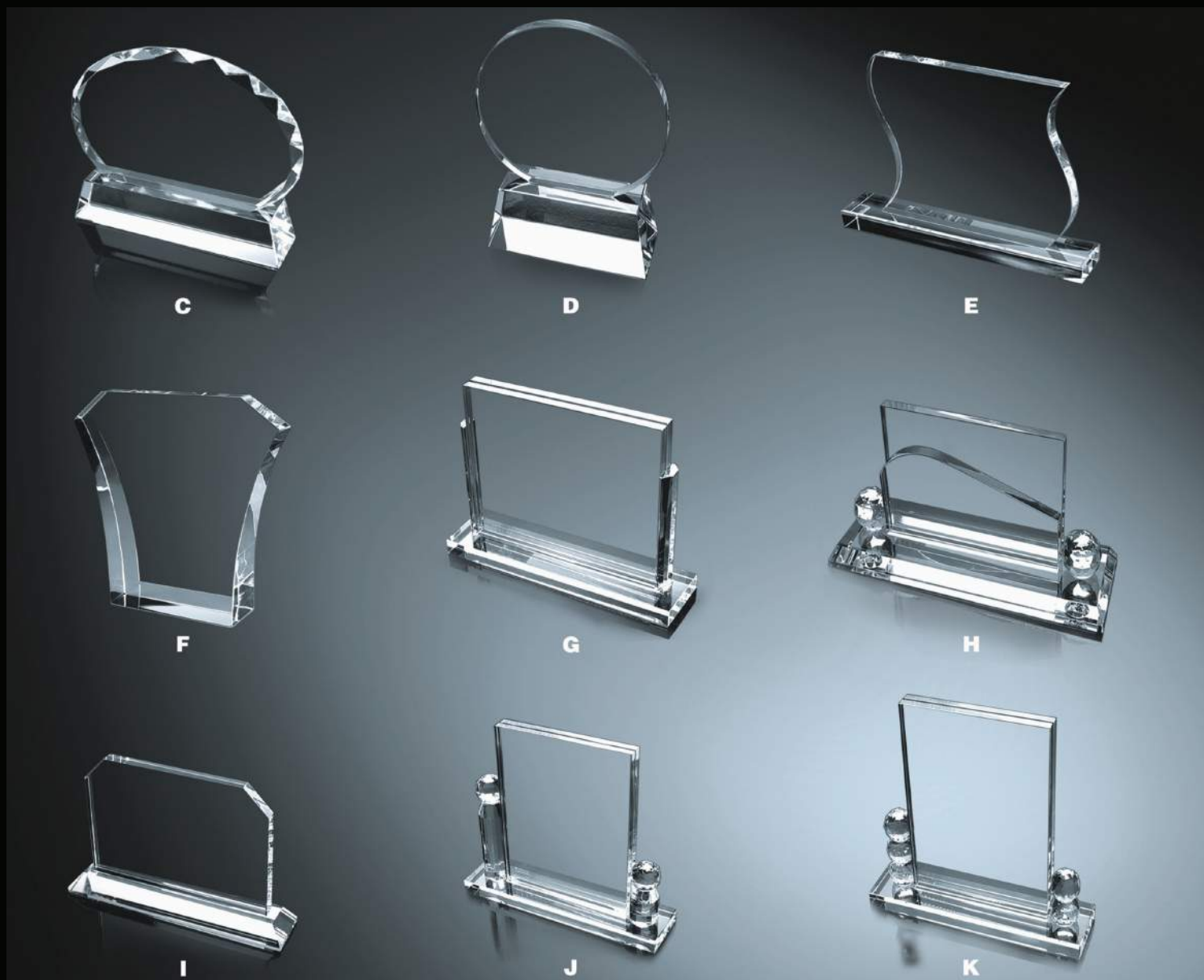
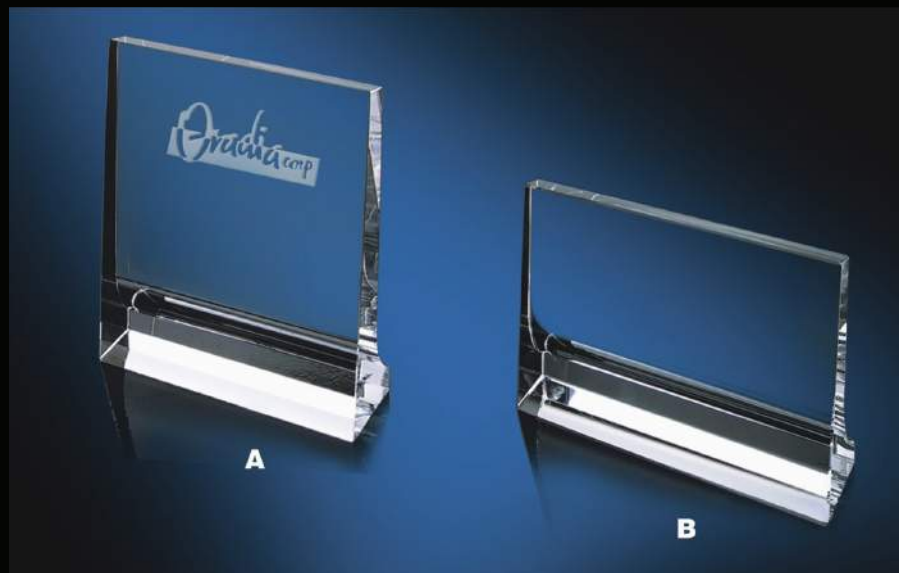
- | | | |
|---|--------------|-------------------|
| A | CB033-S13 | SQUARE RISERS |
| B | CRH002-A40 | APPLE RISERS |
| C | CRH003-P40 | CUT OVAL |
| D | CB034-H15 | HEXAGON DIAMOND |
| E | CRH004-40 | CIRCULAR FACETED |
| F | CB032-H22 | LARGE HEXAGON |
| G | CRS001-S/M/L | ARCHED RISERS |
| H | CB031-H13 | SMALL HEXAGON |
| I | CRS002-H25 | SQUARE GEM RISERS |
| J | CRS003-H25 | ROUND GEM RISERS |



CRYSTAL PLAQUES

These hand-cut and polished plaques can be deep etched as a corporate gift or plaque.

A	CPL001	PREMIER-1
B	CPL002	ORION
C	CPL003	ORACLE
D	CPL004	MERCURY
E	CPL005	VENUS
F	CPL006	CONTOUR
G	CPL007	METROPOLITAN
H	CPL008	PRESIDENTIAL
I	CPL009	ROMA
J	CPL010	ROTUNDA
K	CPL011	LOUVRE



Crystal Showcases



CRYSTAL SHOWCASES

Classical Collection



A	#CB032-H22	8 Piece Hexagon Shaped Base	F	#CPI-50	Pineapple Display
B	#CBD	Birds on a Branch Display	G	#CRH009	Pentagon Ring Holder
C	#CF-M04-L	Iceberg Ring Pedestal	H	#CW0-006L	Watch or Bracelet Display
D	#CF-F06-L	Pacific Ring Pedestal	I	#CBL005-L	Dual Curve Bracelet Ramp
E	#CN008-M	Sculptured Neckform			



European Collection

A	#CBL005-L	Dual Curve Bracelet Ramp
B	#CR006-H15	3 Piece Rounded Square Shaped Base
C	#CN008-L	Sculptured Neckform
D	#CB025	Shallow Diamond Ring Display
E	#CF-M04-L	Iceberg Ring Pedestal

CRYSTAL SHOWCASES



Royal Collection

A	#CDC012	Mushroom Decorative Display	F	#CF-F08-L	Ballerina Ring Pedestal
B	#CBL002-L	Half Oval Bracelet Ramp	G	#CRV-31	V-Cut Column
C	#CB036-H15	6 Piece Octagon Shaped Base	H	#CF-M03-L	Everest Ring Pedestal
D	#CRH014	Hexagon Ring Holder	I	#CF-M04-L	Iceberg Ring Pedestal
E	#CF-F06-L	Pacific Ring Pedestal	J	#CN008-M	Sculptured Neckform



Symphony Collection

A	#CB035-H15	6 Piece Pentagon Shaped Base
B	#CN008-M	Sculptured Neckform
C	#CF-F08-L	Ballerina Ring Pedestal
D	#CB025	Shallow Diamond Ring Display
E	#CRV-31	V-Cut Column

CRYSTAL SHOWCASES

Exquisite Collection



- | | | |
|---|-----------|-------------------------|
| A | #CRV-31 | V-Cut Column |
| B | #CRH001-6 | Round Ring Holder |
| C | #CF-M04-L | Iceberg Ring Pedestal |
| D | #CF-F06-L | Pacific Ring Pedestal |
| E | #CF-F08-L | Ballerina Ring Pedestal |

- | | | |
|---|------------|------------------------------|
| F | #CN-005-S | Curved Top Neckform |
| G | #CBL003-L | Multi-Curve Bracelet Ramp |
| H | #CDC012 | Mushroom Decorative Display |
| I | #CB037-H15 | 6 Piece Triangle Shaped Base |

Museum Collection



- | | | |
|---|-------------|------------------------------------|
| A | #CR005-H38 | 6 Piece Rounded Square Shaped Base |
| B | #CBL004-L | Vertical Bracelet Ramp |
| C | #CER002-S60 | Earring Display Square |
| D | #CF-M04-L | Iceberg Ring Pedestal |
| E | #CF-F08-L | Ballerina Ring Pedestal |

- | | | |
|---|----------|---------------------------|
| F | #CN008-L | Sculptured Neckform |
| G | #CN009-L | Cylinder Necklace Display |
| H | #CRH014 | Hexagon Ring Display |

Glass & Magnetic Displays



Most glass items are made to order and customizable to your needs.

For plaque quotations, Ovadia's online quote tool is recommended:

<http://ovadia.com/glassplaque/order-glass-plaque.php>

GLASS & MAGNETIC DISPLAYS



Milano Collection

- | | | |
|---|------------|-------------------------------|
| A | #AWDB1/DB2 | Base and Back Piece |
| B | #AWDP1 | Small Column with Watch Stand |
| C | #AWDP2 | Big Column with Watch Stand |
| D | #FWBP-1 | Bracelet Pillow - Style 1 |
| E | #FWRFF-1 | Ringer Finger - Style 1 |



#WAC010
8 1/2" x 11" x 1/2"
18 Magnetic Pads



#WAC011
8 1/2" x 11" x 1/2"
36 Magnetic Pads



#WAC012
8 1/2" x 11" x 1/2"
Television display with 12 Magnetic Pads



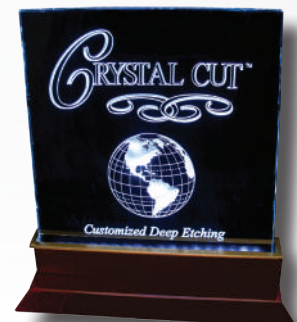
W128
6 1/2" x 5"
oval - with glass, 4
columns and 1 ring



W127
8" x 6"
oval - 2 levels with glass,



W129
8 1/2" x 6"
diamond - 2 levels, 3 columns
and glass logo



GLASS & MAGNETIC DISPLAYS



#WAC001
7 1/2" x 5 1/4" x 1/2"
6 Magnetic Pads



#WAC004
3 3/4" x 6 3/4" x 1/2"
8 Magnetic Pads



#WAC010
7" x 3 3/4" x 3/4"
6 Magnetic Pads



#WAC005
8 1/2" x 4 1/2" x 1/2"
7 Magnetic Pads



#WAC006
7" x 4" x 1/2"
6 Magnetic Pads



#WAC006
7" x 4" x 1/2"
6 Magnetic Pads



#WAC002
6" x 6" x 1/2"
6 Magnetic Pads



#WAC003
6" x 6" x 1/2"
9 Magnetic Pads



#WAC009
7" x 7" x 1/2"
10 Magnetic Pads



#WAC008
9" x 5" x 1/2"
8 Magnetic Pads

Ring clip holder also available for all trays

GLASS PLAQUES

Glass Plaques are made to order, with many customization options available.
This page shows some of our plaque styles with a few sample options.

Ovadia's online quote tool shows a greater range of styles:
<http://ovadia.com/glassplaque/order-glass-plaque.php>

Pricing may vary based on project and volume. Contact us to discuss.

Color Options

Frosted finish can be applied to most glass pieces and specific details (e.g. logos). Ask for more info.

Ink can be applied to glass directly to create a back fill effect, or applied to specific details for added emphasis. Additional fees may apply.

glass colors



clear jade black

ink options



white light silver titanium silver gold brown maroon
green blue red
Custom ink colors available based on pantone colors.



#ST6010 7 1/2" x 5 1/4" x 1/2"
Curved Glass Plaque,
shown clear w/ frosted logo
\$19



#TS3156 3" x 4" x 3/4"
Slot Edge, shown jade w/
frosted logo & gold lettering
\$20



#AFC241C 2" x 4" x 1"
Angled Glass Plaque, shown clear
w/ frosted back etching
\$18



#TS5084-4 2" x 3" x 3/8"
4-side Beveled Edge, shown
clear w/ black back etching
\$18.50



#TS5044-4 2" x 3" x 3/8"
4-side Beveled Edge, shown
jade w/ black back etching
\$17.50



#TS5048-4 2" x 3" x 3/8"
4-side Beveled Edge, shown
clear w/ titanium silver back
fill & black back etching
\$18.50



#TS60851 1 7/8" x 3" x 3/4"
One Side Slant, shown clear w/ gold
back fill & maroon back etching
\$20



#TS3171 2" x 4" x 3/8"
Slot Edge, shown clear w/
black front etching
\$18.50



#TS4187-4 2" x 4" x 3/8"
4-side Beveled Edge, shown
clear w/ black back etching
\$19



#TS4187-4 2" x 4" x 3/8"
4-side Beveled Edge, shown black
w/ light silver front etching
\$19